

Crane Operator Certification

Potential Hazards

Cranes or other lifting/carrying equipment may pose a hazard to workers and lead to worker injury if the equipment is not operated by certified/ticketed operators.

How to Control the Hazards

To control hazards to persons working in the area of the cranes, the crane operator must be trained and authorized / certified to operate the particular crane. In Manitoba, all crane operators must be certified as a journeyperson, registered as an apprentice or hold an exemption permit. Apprentices must be supervised by a journeyperson in the trade employed on the same job site as the apprentice.

In Manitoba, a Certificate of Qualification for the trade of Crane and Hoisting Equipment Operator is issued by Apprenticeship Manitoba or Jobs and the Economy, under *The Apprenticeship and Certification Act* and trade regulation for one of three branches of the trade:

- Branch 1: Mobile Crane Operator (weight range: greater than 7,299 kg)
- Branch 2: Boom Truck Hoist Operator (weight range: minimum 7, 299 kg to a maximum 40, 825 kg)
- Branch 3: Tower Crane Operator (no weight range)

Mobile and Tower Crane Operator is an “Interprovincial Standard Seal (Red Seal)” endorsed trade that allows certified journeypersons to have their credentials recognized anywhere in Canada.

All operators must carry on their person, a valid pocket card (apprentices) or a Certificate of Qualification (journeypersons) or an exemption permit issued by Apprenticeship Manitoba. This documentation must be available upon request to any Apprenticeship Training Coordinator (ATC) or authorized safety and health officer of the Workplace Safety and Health Branch of Manitoba Labour and Immigration on any worksite where an inspection is being conducted.

The following pages (2-4) provide a visual description of cranes, and lifting/carrying equipment that require the operator of the equipment to be certified. (*These images are used, with permission, from the WorkSafeBC document, “Types of Cranes Requiring Certified Crane Operators.”*)

(see next page)

SAFE Work Manitoba contact information:

Winnipeg: 204-957-SAFE (7233)

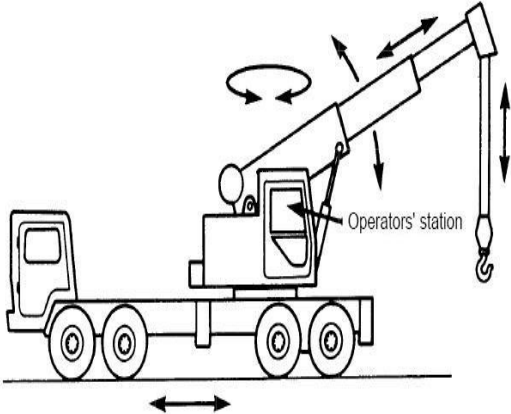
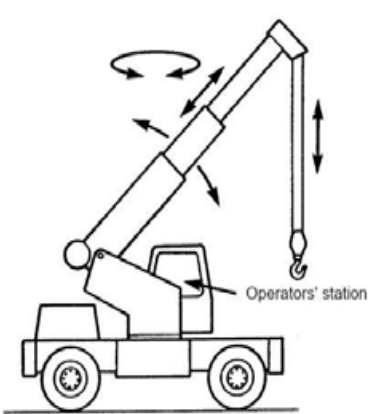
Toll-Free: 1-855-957-SAFE (7233)

Publications and resources available at: safemanitoba.com

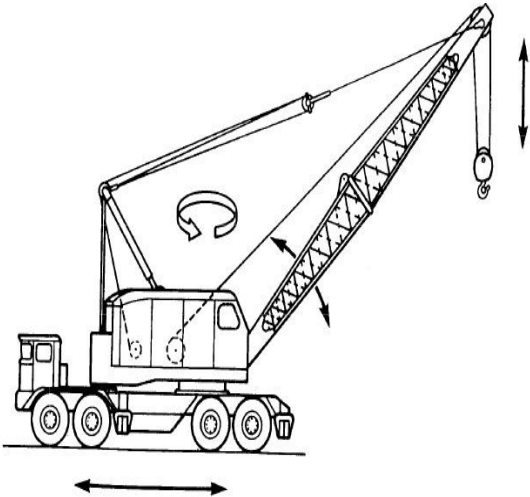


Types of Cranes Requiring Certified Crane Operators:

Wheel-Mounted Mobile Cranes

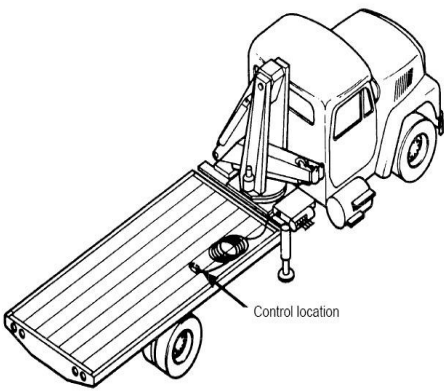
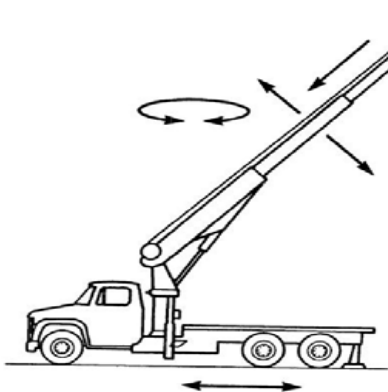


Telescopic Boom-Single Control Telescopic Boom-Multi Control

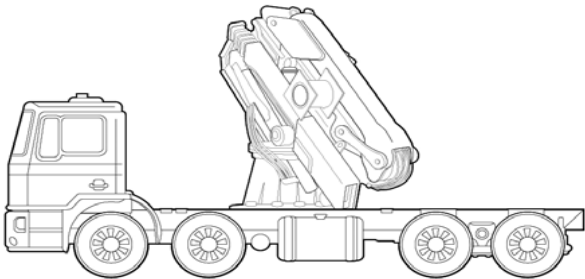


Latticework Boom Multi Control

Commercial Truck-Mounted Crane



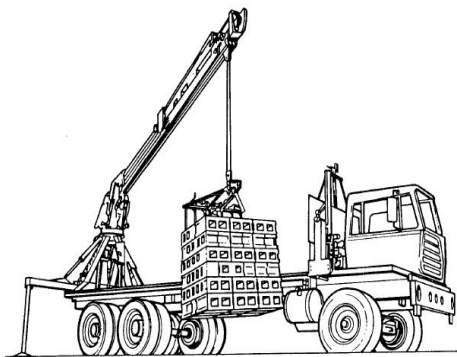
Hydraulic Boom - "If over 7300kgs - 8 Tons" Articulated Boom – "If over 7300kgs - 8 Tons"



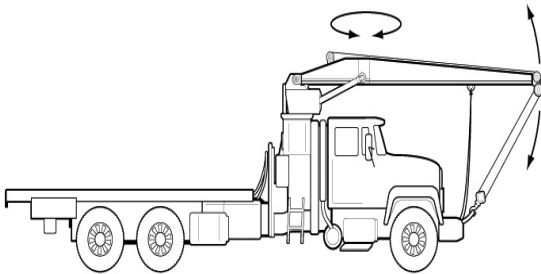
Knuckle Boom



Commercial Truck-Mounted Crane (cont'd)

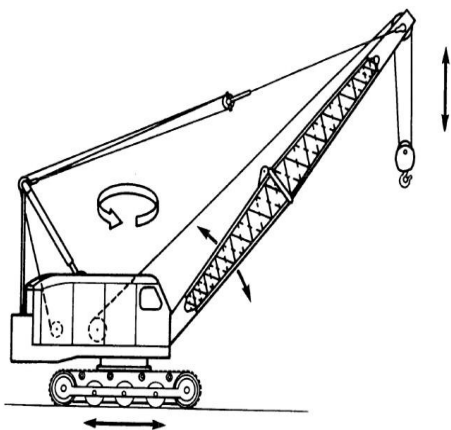


Trolley Boom – “If over 7300kgs – 8 Tons”

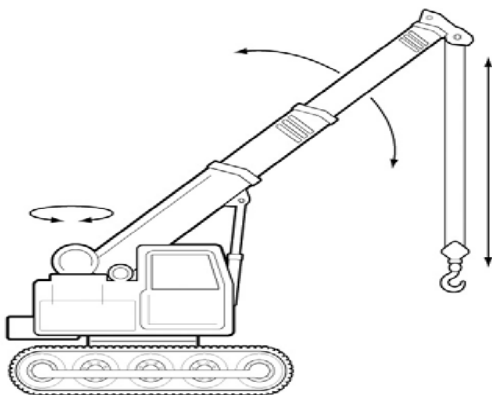


Stiff Boom – “If over 7300kgs – 8 Tons”

Crawler Cranes

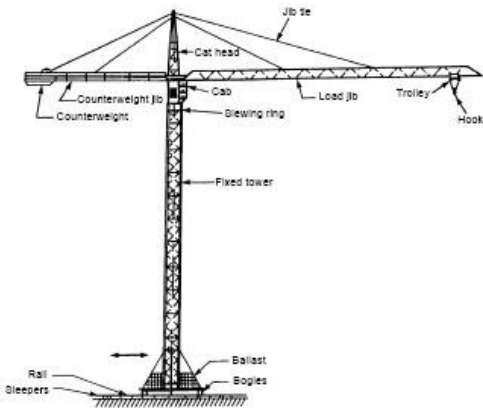


Latticework Boom

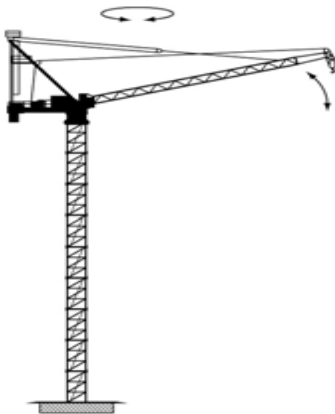


Hydraulic Boom

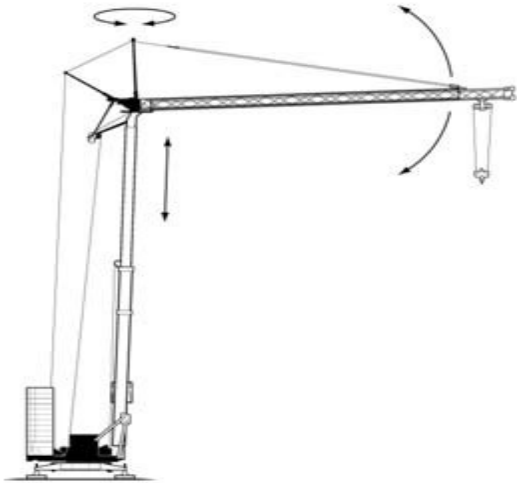
Tower Cranes



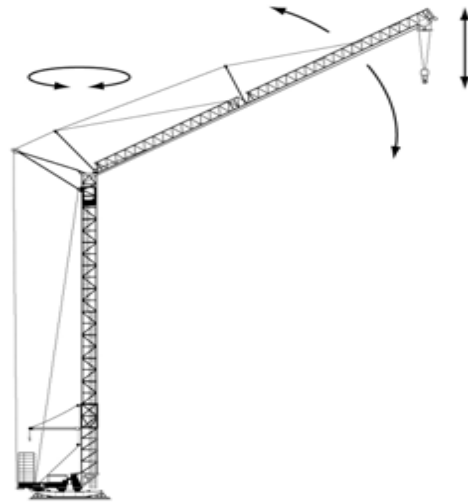
Saddle Jib



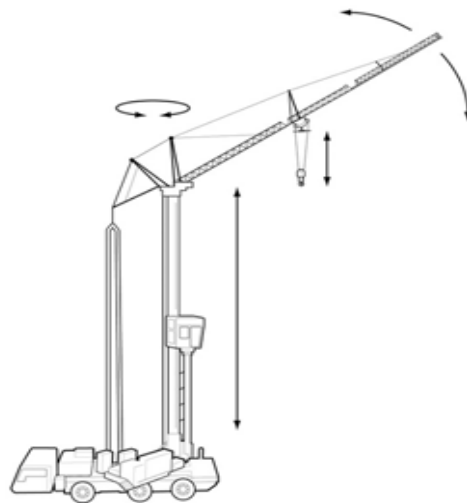
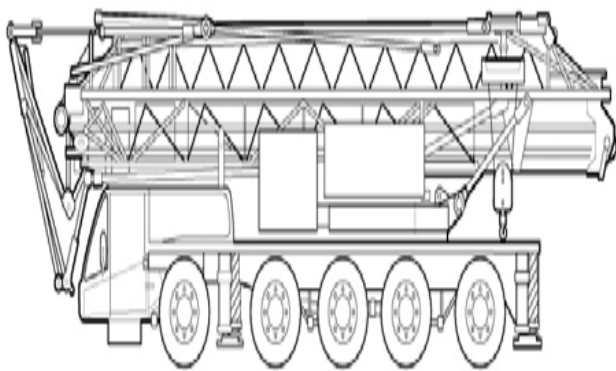
Luffing Jib



Telescoping



Inner & Outer Tower



Truck Mounted Self-Erecting Tower With Operator Cab

Contact the Apprenticeship Branch for more information on Certification:
100 – 111 Lombard Ave., Winnipeg, Manitoba
Telephone: 204-945-3337
Toll-free: 1-877-978-7233

Reference to legal requirements under workplace safety and health legislation:

- Cranes and Hoists: Manitoba Regulation 217/2006 Part 23
- W210, Workplace Safety and Health Act
- The Apprenticeship and Certification Act/Trade of Crane and Hoisting Equipment Operator Regulation Manitoba Regulation 91/2000R

Additional workplace safety and health information available at: safemanitoba.com

Revised: June 2014

Last Reviewed/Revised: September 2011